

ANAL PATHOLOGY WITH TERC FISH TEST

OmniPathology is a **problem-solving partner** dedicated to helping you improve your office efficiency through our caring, customized and outcomes-oriented approach to deliver:

- **Timely/Digital Report Delivery** - We interface with your EMR
- **Enhance Early Detection of Anal Cancer** - Comprehensive test menu designed to identify patients who need close follow-up and aggressive treatment
- **Minimize Patient Complaints** - A simplified approach to in-network billing

ANAL PAP

- Cytological screening of anal pap specimens which includes morphological screening of the cells to identify abnormal cells
- Molecular and Cytogenetics: See Below

HISTOLOGY (ANAL BIOPSIES)

Histologic assessment of anal condylomata and anal dysplastic lesions (Anal Intraepithelial Neoplasia-AIN)

- HPV subtyping by In Situ Hybridization (ISH) for low risk (HPV 6/11) and high risk (HPV 16/18)
- Evaluation of high-grade dysplasia using P16 and Ki67 immunohistochemical (IHC) stains

MOLECULAR (PERFORMED ON THE PAP SMEAR)

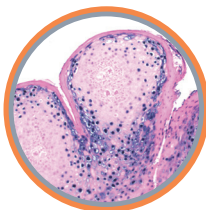
- Molecular testing for HPV including genotyping for HPV 16/18/45

CYTOGENETICS (PERFORMED ON THE PAP SMEAR)

- TERC FISH: A very sensitive cytogenetic test using Fluorescent In Situ Hybridization technology to identify acquired amplification of the TERC gene, which is linked to anal and cervical squamous cell carcinoma in HPV positive patients

IN SITU HYBRIDIZATION AND IMMUNOHISTOCHEMISTRY

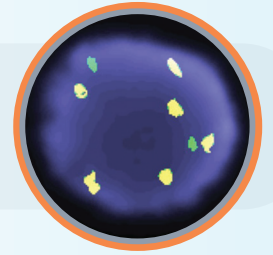
HPV Subtyping by ISH and P16 by IHC



SERVICE HIGHLIGHTS

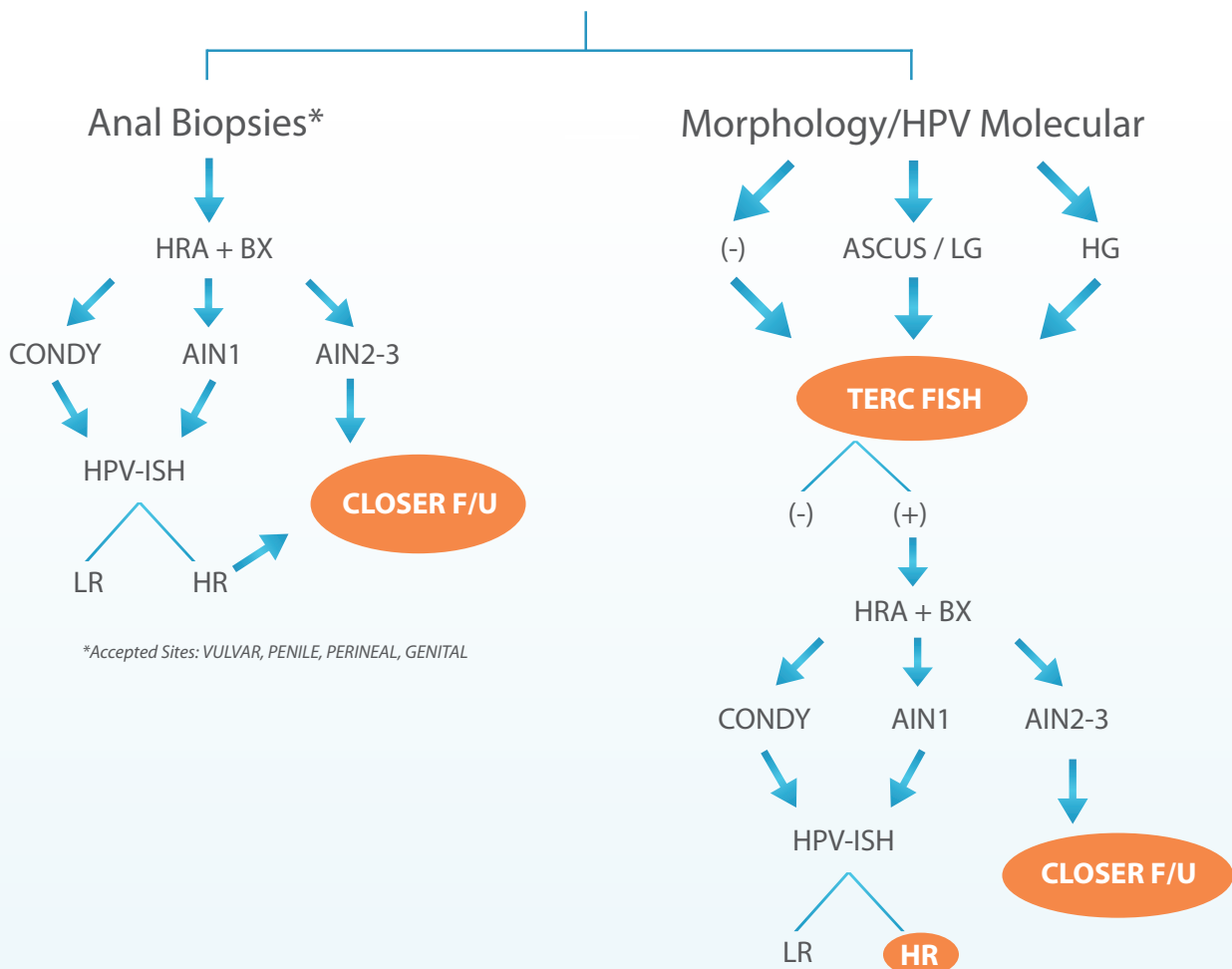
- Best-in-class turnaround time:
 - ◆ 24 hours for simple cases (cases that do not require any work-up)
 - ◆ 72 hours for complete work up of cytological and histological samples, including FISH, IHC and ISH testing
- OmniPathology is in-network for most major insurance plans and offers reasonable rates for cash patients
- Personalized service that includes telephonic communication of malignant and significant diagnoses
- Clear comprehensive pathology reports with colored microscopic images

With TERC FISH on anal pap smears, we have identified positive cases where the cytology was negative or atypical. In all of the cytologically high grade lesions, the TERC FISH was positive, confirming the cytological diagnosis. In these cases, closer follow-up with HRA is recommended.



OMNIPATHWAYS TEST WORKFLOW

OMNIPATHWAYS ANAL CANCER SCREENING (OMNI PACS)



GLOSSARY OF ABBREVIATIONS **CONDY**: Condyloma • **HRA**: High Resolution Anoscopy • **ASCUS**: Atypical Squamous Cells of Undetermined Significance
LG: Low Grade • **HG**: High Grade • **AIN1**: Anal Intraepithelial Neoplasia • **HPV-ISH**: In Situ Hybridization • **LR**: Low Risk 6/11 • **HR**: High Risk 16/18